

## Accessories

Z 300 ■ Z 300 K

Z 323 ■ Z 323 K

# Accessories



- Maximum volume 400 ml (4 x 100 ml)
- Spin many tubes at once (e.g. 64 x 0,4 ml)
- Inserts and rotors for microtiter plates
- High speed angle rotors

- Wide selection of tube types (e.g. Vacutainer) and tube sizes (0,4 ml up to 100 ml)
- Angle rotors for "Falcon"-type-tubes
- Hermetically sealable rotors for centrifuging hazardous substances



## Rotor/Bucket

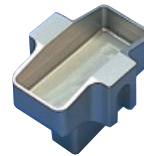


Round bucket: 605.000



	Z 300	Z 323
Acceleration in sec.:	32/126	31
Deceleration (min./max.):	39/108	31/142
Speed max. (rpm):	4.000	5.000
RCF-value (x g):	2.540	3.969
Zentrifugal radius (cm):	14,2	14,2
Temperature at n-max.:	-4°C	-8°C

Rectangular bucket for cyto-system: 605.010



	Z 300	Z 323
Acceleration in sec.:	35	29
Deceleration (min./max.):	39	34/169
Speed max. (rpm):	4.000	5.000
RCF-value (x g):	1.305	2.040
Zentrifugal radius (cm):	7,3	7,3
Temperature at n-max.:	-5°C	-10°C

Swing out rotor 4 x 100 ml  
Order No.: 220.72 V04

Volume	1,5 ml	5 ml	6 ml	Hemolyse	RIA	15 ml	15 ml	25 ml	50 ml	50 ml	50 ml
Ø in mm	11	12,5	13,5	13,5	13,5	17	17	25	29	29	34
Length min./max. (mm)	42	64/115	67/115	67/115	67/115	100/115	120	92/118	116	93/118	92/118
Tubes per rotor	20	16	28	28	28	16	8	4	4	4	4
Radius correction (cm)	0,2	0,2	0,2	0,2	0,2	0,2	---	0,2	---	0,2	0,2
Order No.	705.009	705.008	705.007	705.007	705.007	705.003	705.005	705.002	705.006	705.010	705.001

	Vacutainer	Sarstedt
Volume	100 ml	7 ml
Ø in mm	40	12,5
Length min./max. (mm)	90/114	64/115
Tubes per rotor	4	16
Radius correction (cm)	0,2	0,2
Order No.	705.000	705.011



	Z 300	Z 323
Acceleration in sec.:		
Deceleration (min./max.):		
Speed max. (rpm):	4.500	4.500
RCF-value (x g):	3.350	3.350
Zentrifugal radius (cm):	14,8	14,8
Temperature at n-max.:		

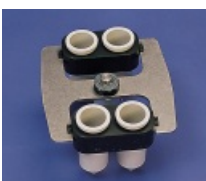
Swing out rotor 4 x 100 ml  
Order No.: 221.12 V01

	Vacutainer							Sarstedt			
Volume	5 ml	7 ml	15 ml	15 ml	50 ml	85 ml	100 ml	4,5 / 5 ml	8 ml	2 - 4 ml	3,2 - 6 ml
Ø in mm	13	13	17	17	29	38	44	13	16	12	16,5
Length min./max. (mm)	75/100	75/100	90/108	120	116	90/108	90/108	68/108	90/108	62/120	90/120
Tubes per rotor	36	36	28	8	4	4	4	28	28	36	28
Radius correction (cm)	0,6	0,6	0,3	0	0,3	0,7	0,7	0,6	0,3	0,8	0,3
Order No.	626.005	626.005	626.004	626.003	626.002	626.001	626.000	626.006	626.004	626.007	626.004



	Z 300	Z 323	Order No.:	Tube rack:	Ø (mm):	Length (min./max.):
Acceleration in sec.:	22/82	30	701.010	1 x 15 ml-glass	17,5	95/115
Deceleration (min./max.):	25/69	11/74	701.011	1 x 7 ml	13,5	95/115
Speed max. (rpm):	5.000	5.000	701.012	1 x 5 ml (RIA)	13,5	70/90
RCF-value (x g):	4.165	4.165				
Zentrifugal radius (cm):	14,9	14,9				
Temperature at n-max.:	0°C	-10°C				

Swing out rotor 8 x 15 ml  
Order No.: 221.04 V01



	Z 300	Z 323	Order No.:	Tube rack:	Ø (mm):	Length (min./max.):
Acceleration in sec.:	19/56	26	603.000	Inserts, 50 ml	30	105/120
Deceleration (min./max.):	21/70	11/62	603.001	Inserts, 15 ml	17,5	116/125
Speed max. (rpm):	4.000	4.000				
RCF-value (x g):	2.540	2.540				
Zentrifugal radius (cm):	14,2	14,2				
Temperature at n-max.:	-4°C	-10°C				

Swing out rotor 4 x 50 ml  
Order No.: 221.05 V01

## Rotor/Bucket

## Adapter



24 x 15 ml  
Order No.: 220.81 V06

	Z 300	Z 323
Acceleration in sec.:	40/113	31
Deceleration (min./max.):	35/111	18/90
Speed max. (rpm):	3.500	3.500
RCF-value (x g):	1.890/ 1.972	1.890/ 1.972
Centrifugal radius (cm):	13,8/ 14,4	13,8/ 14,4
Temperature at n-max.:	-8°C	-9°C

Order No.:	Tube rack:	Ø (mm):	Length (min./max.):
701.010	1 x 15 ml-glass	17,5	95/115
701.011	1 x 7 ml	13,5	95/115
701.012	1 x 5 ml (RIA)	13,5	70/90



12 x 15 ml  
Order No.: 220.96 V02

	Z 300	Z 323
Acceleration in sec.:	27/100	21
Deceleration (min./max.):	28/142	28/60
Speed max. (rpm):	6.000	6.000
RCF-value (x g):	4.185	4.185
Centrifugal radius (cm):	10,4	10,4
Temperature at n-max.:	-5°C	-6°C

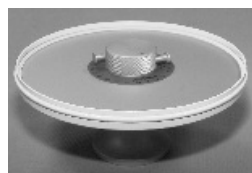
Order No.:	Tube rack:	Ø (mm):	Length (min./max.):
701.010	1 x 15 ml-glass	17,5	95/115
701.011	1 x 7 ml	13,5	95/115
701.012	1 x 5 ml (RIA)	13,5	70/90



6 x 50 ml  
Order No.: 220.97 V02

	Z 300	Z 323
Acceleration in sec.:	26/100	26
Deceleration (min./max.):	27/142	27/60
Speed max. (rpm):	6.000	6.000
RCF-value (x g):	3.904	3.904
Centrifugal radius (cm):	9,7	9,7
Temperature at n-max.:	-4°C	-6°C

Order No.:	Tube rack:	Ø (mm):	Length (min./max.):
without adapter	1 x 50 ml-Falcon	30	105/120
without adapter	1 x 50 ml	30	95/115
708.002	1 x 30 ml	30	92/95
708.003	1 x 16 ml	18	100/105
708.004	1 x 15 ml	17	100/105
603.001	1 x 15 ml-Falcon	17,5	116/125



Hematocrit rotor 24 places  
Order No.: 220.89 V01

	Z 300	Z 323
Acceleration in sec.:	19/41	13
Deceleration (min./max.):	21/57	8/55
Speed max. (rpm):	12.000	12.000
RCF-value (x g):	15.294	15.294
Centrifugal radius (cm):	9,5	9,5
Temperature at n-max.:	-8°C	-10°C



6 x 85 ml  
Order No.: 220.78 V02

	Z 323
Acceleration in sec.:	64
Deceleration (min./max.):	71/563
Speed max. (rpm):	13.500
RCF-value (x g):	20.987
Centrifugal radius (cm):	10,3
Temperature at n-max.:	1°C

Order No.:	Tube rack:	Ø (mm):	Length (min./max.):
707.000	2 x 15 ml	17	100
707.001	1 x 15 ml	17	103/110
707.002	1 x 30 ml	25	90/103
707.003	1 x 50 ml	29	105
707.004	1 x 50 ml-Falcon	29	118
707.003 +			
708.001	1 x 30 ml-glass	25	105
707.003 +			
708.000	1 x 15 ml-glass	17	100/105
without adapter	1 x 85 ml	38	113

hermetically sealable  
Order No.: 220.78 V03



8 x 50 ml  
Order No.: 220.80 V02

	Z 323
Acceleration in sec.:	50
Deceleration (min./max.):	44/310
Speed max. (rpm):	13.500
RCF-value (x g):	19.561
Centrifugal radius (cm):	9,6
Temperature at n-max.:	-2°C

Order No.:	Tube rack:	Ø (mm):	Length (min./max.):
708.000	1 x 15 ml-glass	17	100
708.004	1 x 15 ml	17	100/105
708.003	1 x 16 ml	18	100/105
708.002	1 x 30 ml	25	92/95
708.001	1 x 30 ml-glass	25	105
without adapter	1 x 50 ml	29	105

hermetically sealable  
Order No.: 220.80 V03

## Rotor/Bucket

## Adapter



12 x 12 ml  
Order No.: 220.85 V01

hermetically sealable  
Order No.: 220.85 V02

Acceleration in sec.:  
Deceleration (min./max.):  
Speed max. (rpm):  
RCF-value (x g):  
Centrifugal radius (cm):  
Temperature at n-max.:

Z 323  
38  
44/360  
13.500  
20.172  
9,9  
-3°C

Order No.:	Tube rack:	Ø (mm):	Length (min./max.):
701.003	1 x 10 ml	16	80
without adapter	1 x 12 ml	16	98/109



Swing out rotor 2 x Microtiter  
Order No.: 220.50 V06

	Z 300	Z 323
Acceleration in sec.:	33/77	27
Deceleration (min./max.):	30/97	15/98
Speed max. (rpm):	3.500	3.500
RCF-value (x g):	1.424	1.424
Centrifugal radius (cm):	10,4	10,4
Temperature at n-max.:	-8°C	-10°C

Order No.:  
706.000  
Tube rack:  
48 x 1,5 ml (2,0 ml)  
reaction tubes



24 x 1,5 ml / 2,0 ml  
Order No.: 220.87 V03

hermetically sealable  
Order No.: 220.87 V04

	Z 300	Z 323
Acceleration in sec.:	23/77	22
Deceleration (min./max.):	32/124	30/234
Speed max. (rpm):	13.500	17.000
RCF-value (x g):	17.320	27.464
Centrifugal radius (cm):	8,5	8,5
Temperature at n-max.:	0°C	-5°C

Order No.:

704.004	0,4 ml tubes (Ø 6 x 50 mm) set of adapters (12 pcs.)
704.005	0,5 ml tubes (Ø 8 x 32 mm) set of adapters (12 pcs.)

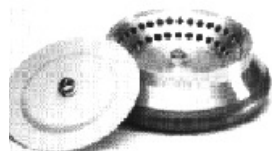


44 x 1,5 ml / 2,0 ml  
Order No.: 220.88 V01

	Z 300	Z 323
Acceleration in sec.:	23/37	19
Deceleration (min./max.):	21/56	19/154
Speed max. (rpm):	13.500	13.500
RCF-value (x g):	14.467/ 17.523	14.467/ 17.523
Centrifugal radius (cm):	7,1/8,6	7,1/8,6
Temperature at n-max.:	4°C	-7°C

Order No.:

704.004	0,4 ml tubes (Ø 6 x 50 mm) set of adapters (12 pcs.)
704.005	0,5 ml tubes (Ø 8 x 32 mm) set of adapters (12 pcs.)



64 x 0,4 ml  
Order No.: 220.92 V01

	Z 300	Z 323
Acceleration in sec.:	32/82	18
Deceleration (min./max.):	40/150	19/154
Speed max. (rpm):	13.500	13.500
RCF-value (x g):	14.056/ 16.708	14.059/ 16.708
Centrifugal radius (cm):	6,9/8,2	6,9/8,2
Temperature at n-max.:	4°C	-10°C